

GATE VALVES CLASS 150

Table 2

GATE VALVES 2"-12"/150

Gate Valves 2"-8"/150

Gate valves 10"-12"/150

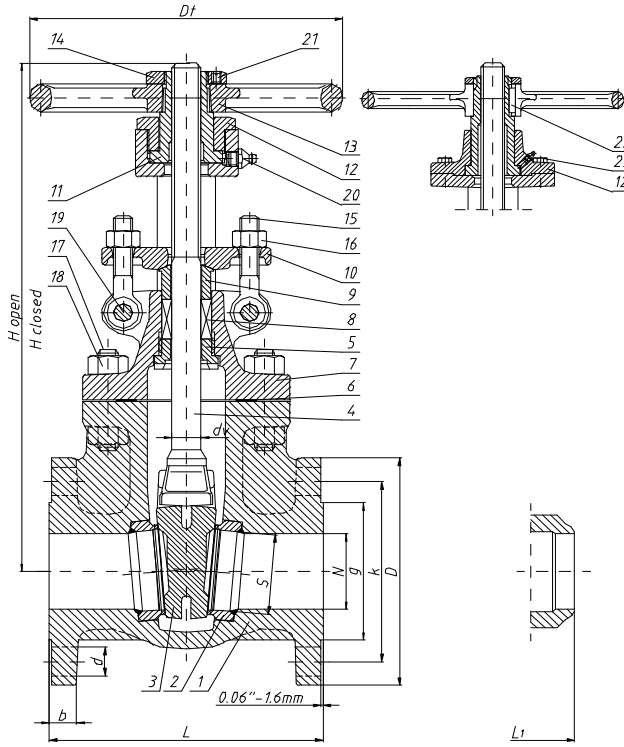


FIG. Z1C

FIG. Z1WC

Pos	Parts	Material specification
1	Body	ASTM A 216 Gr WCB
2	Seat Ring	ASTM A 105/Co-Cr-W Facing ASTM A 216 Gr WCB/Co-Cr-W Facing Facing ASTM A 108 Gr 1018-1020/ Co-Cr-W Facing
3	Wedge	ASTM A 182 Gr F6a or ASTM A 216 Gr WCB/13%Cr Facing
4	Stem	ASTM A 182 Gr F6a
5	Backseat Bushing	ASTM A 276 Type 410
6	Gasket	Soft Steel Corrugated or SS Corrugated + Graphite
7	Bonnet	ASTM A 216 Gr WCB
8	Packing	Graphoil
9	Gland	ASTM A 182 Gr F6a
10	Gland Flange	ASTM A 105
11	Yoke Nut	ASTM A 439 Type D2
12	Yoke Nut Retaining Nut N° 2"-8" N° 10" and lager Yoke Cap	ASTM A 536 Gr 65-45-12 ASTM A 216 Gr WCB
13	Handwheel	ASTM A 47 Gr 32510
14	Handwheel Nut	ASTM A 47 Gr 32510
15	Gland Eyebolt	Carbon Steel
16	Gland Eyebolt Nut	ASTM A 307 Gr B
17	Body Bonnet Stud Bolt	ASTM A 193 Gr B7
18	Body Bonnet Stud Nut	ASTM A 194 Gr 2H
19	Hinge Pin	Carbon Steel
20	Lube Fitting	Carbon Steel
21	Set Screw Lock	Carbon Steel
22	Key	Carbon Steel
23	Bolt	Carbon Steel

Table 3

TEST PRESSURE					
Hydrostatic test pressure				Pneumatic test pressure	
Shell		Seat		Seat	
(psig)	(bar gauge)	(psig)	(bar gauge)	(psig)	(bar gauge)
450	31.0	315	21.7	80	5.5

Table 4

V S I Z E	GENERAL DIMENSIONS																
	Port		Line Flange					Face to Face	BW	Height		Stem	Line Flange Bolts		Turns to Open	Hand-wheel Dia	Weight Approx.
	Dia	Dia	Dia	Thick-ness min	Bolt Circle Dia	Hole Dia	Raised Face Dia			H	H		No	Size			
	N (in) (mm)	S (in) (mm)	D (in) (mm)	b (in) (mm)	k (in) (mm)	d (in) (mm)	g (in) (mm)	L (in) (mm)	L ₁ (in) (mm)	(in) (mm)	(in) (mm)	dv (in) (mm)	(in) (mm)	Dt (in) (mm)	(lbs) (kg)		
2	2.00 50.8	2.11 53.5	6.00 152.4	0.62 15.7	4.75 120.7	0.75 19.1	3.62 91.9	7.00 177.8	8.50 215.9	16.29 414.9	13.58 345.0	3/4 19.1	4 5/8 15.9	11.00	8.00 203.2	46.2 21	
2 ^{1/2}	2.50 63.5	2.58 65.5	7.00 177.8	0.69 17.5	5.50 139.7	0.75 19.1	4.12 104.6	7.50 190.5	9.50 241.3	17.32 440.0	14.17 360.0	3/4 19.1	4 5/8 15.9	12.60	8.00 203.2	61.6 28	
3	3.00 76.2	3.07 78	7.50 190.5	0.75 19.1	6.00 152.4	0.75 19.1	5.00 127	8.00 203.2	11.13 282.6	19.68 500.1	16.14 410.0	7/8 22.2	4 5/8 15.9	12.40	9.00 228.6	77 35	
4	4.00 101.6	4.09 104	9.00 228.6	0.94 23.9	7.50 190.5	0.75 19.1	6.19 157.2	9.00 228.6	12.00 304.8	24.76 629.1	19.84 504.0	1 25.4	8 5/8 15.9	14.80	10.00 254.0	116.6 53	
6	6.00 152.4	6.15 156.2	11.0 279.4	1.00 25.4	9.50 241.3	0.88 22.4	8.50 215.9	10.50 266.7	15.88 403.1	32.80 833.3	25.9 658.0	1 ^{1/4} 31.8	8 3/4 19.1	13.60	14.00 355.6	206.8 94	
8	8.00 203.2	8.15 207	13.5 342.9	1.12 28.4	11.75 298.5	0.88 22.4	10.62 269.7	11.50 292.1	16.50 419.1	40.74 1035	32.44 824.1	1 ^{3/8} 34.9	8 3/4 19.1	16.50	16.00 406.4	347.6 158	
10	10.0 254.0	10.2 259	16.0 406.4	1.19 30.2	14.25 361.9	1.00 25.4	12.75 323.9	13.00 330.2	18.00 457.2	50.11 1273	38.78 985.1	1 ^{1/2} 38.1	12 7/8 22.2	22.80	18.00 457.2	523.6 238	
12	12.0 304.8	12.24 311	19.0 482.6	1.25 31.8	17.00 431.8	1.00 25.4	15.00 381	14.00 355.6	19.75 501.7	58.66 1490	45.31 1151	1 ^{5/8} 41.3	12 7/8 22.2	26.80	20.00 508.0	761.2 346	

Gate valves are produced in according to API 600, ASME/ANSI B16.5, B.16.10, B16.25, B16.34 and testing in according to API 598.